

# *Earl Reynolds, Jr.*

*and his influence on the Boise Office*

**CH2MHILL**



CH2M  
HILL

Mark Bowen

November 11, 2009

# Key Personal Milestones

**CH2MHILL**

**1923**  
Time magazine debuts

**1920-30**  
Average annual earnings \$1236;  
Dow Jones High 100 Low 67

**1930-40**  
Food Prices:  
Milk, 14 cents a qt.; Bread, 9 cents a loaf;  
Round Steak, 42 cents a pound

**1940**  
Graduated from  
Klamath Union High School

**1943**  
Joined the Navy (SeaBees)

**1947**  
Graduated Oregon State

**1948**  
Obtained a Masters Degree from Yale

**1950**  
First broadcast of "What's My Line," on CBS-TV

**1923**  
Born January 23

**1939-45**  
World War II

**1940**  
Enrolled at  
Oregon State College

**1943**  
FDR signs withholding tax bill into law

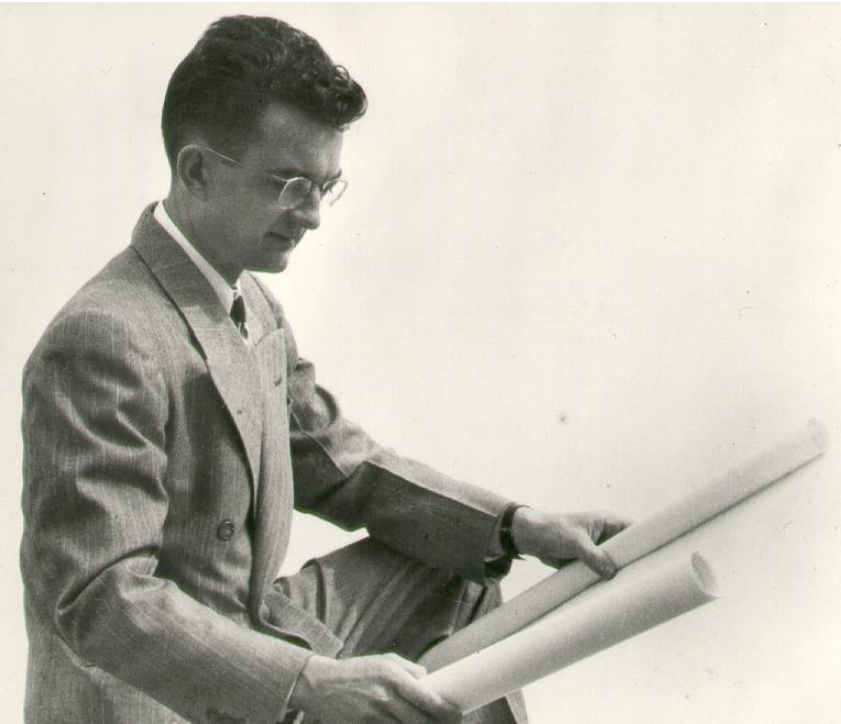
**1947**  
Joined Cornell Howland Hayes and Merryfield for the summer

**1948**  
Joined Cornell Howland Hayes and Merryfield as a  
full time employee

**1950**  
Opens CH2M Boise Office

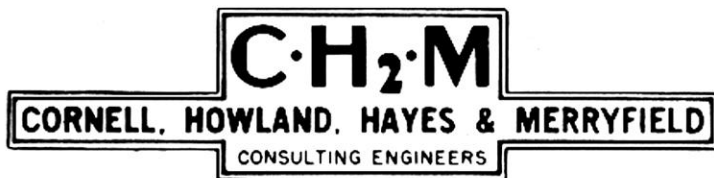
# Boise: 59 Years of Success

CH2MHILL



“...purchased 3 good oak chairs for \$10...clients can start coming through the door anytime.”

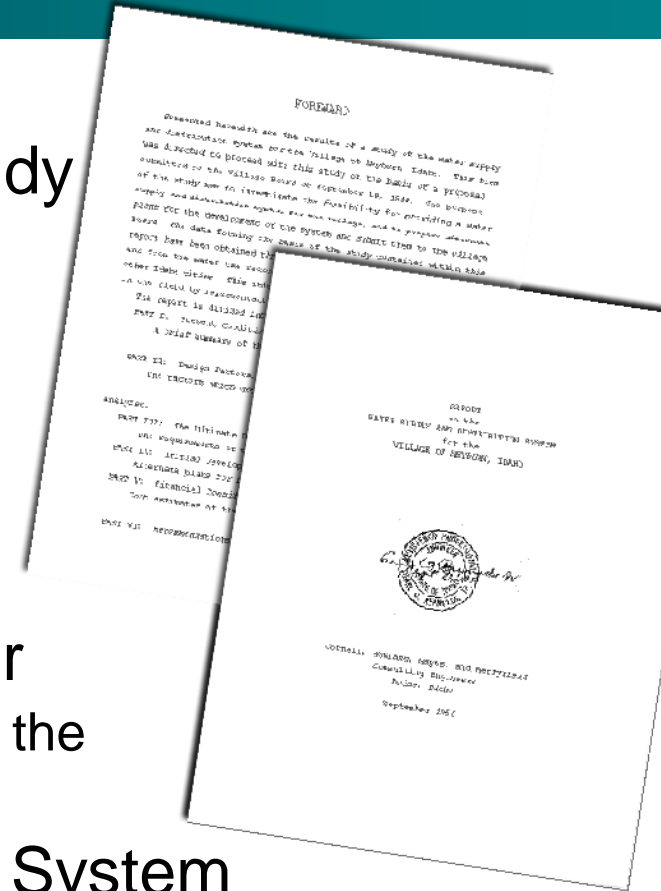
*Earl Reynolds, Jr.  
First Boise Office Manager*



# Key Projects of the '50s

CH2MHILL

- Village of Heyburn – Water System Study
  - First Boise Project
  - \$400 Fee
- US Army COE – Mountain Home AFB Utilities Study
- Crane Creek Reservoir Board – Rehabilitation of Crane Creek Reservoir
  - Largest Storage per Earth Fill Dam volume in the Country
- Bench Sewer District – Sanitary Sewer System
  - \$4M Project
  - Aerial Photo Mapping
  - First Digital Computer Modeling used for design



'50s

'60s

'70s

'80s

'90s

'00s

Beyond

# Key Projects of the '50s

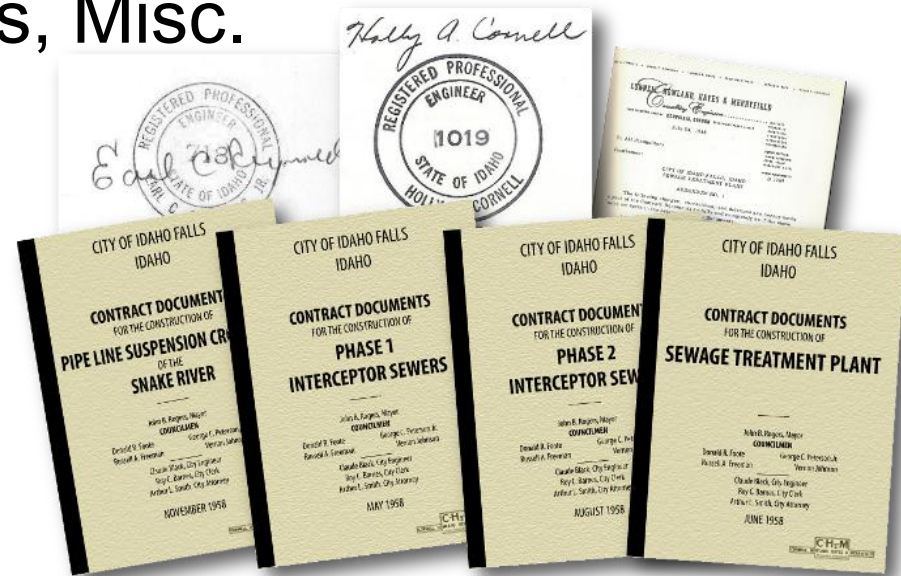
CH2MHILL

- Misc Structural Work – Architects, Gate City Steel, Albertson's, Misc. School Districts

- The Structural Engineering Firm in Idaho

- City of Idaho Falls

- Interceptor sewers
- New primary WWTP (Most of the components from this initial primary plant construction are in service today in some fashion.)
- Pipeline suspension crossing



'50s

'60s

'70s

'80s

'90s

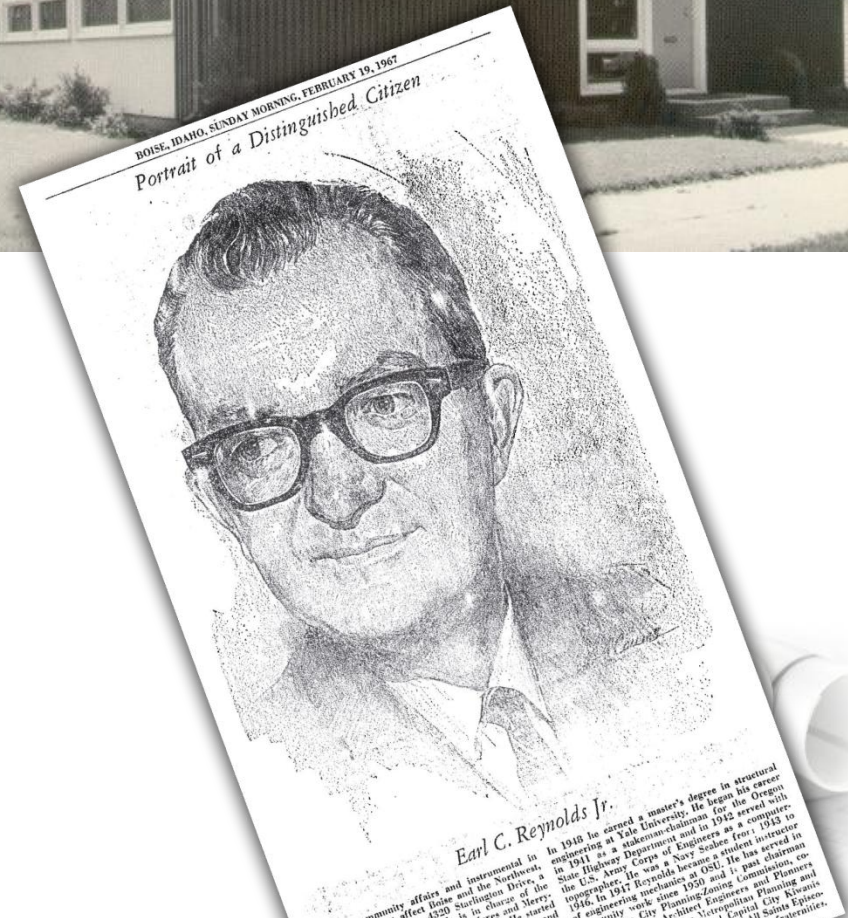
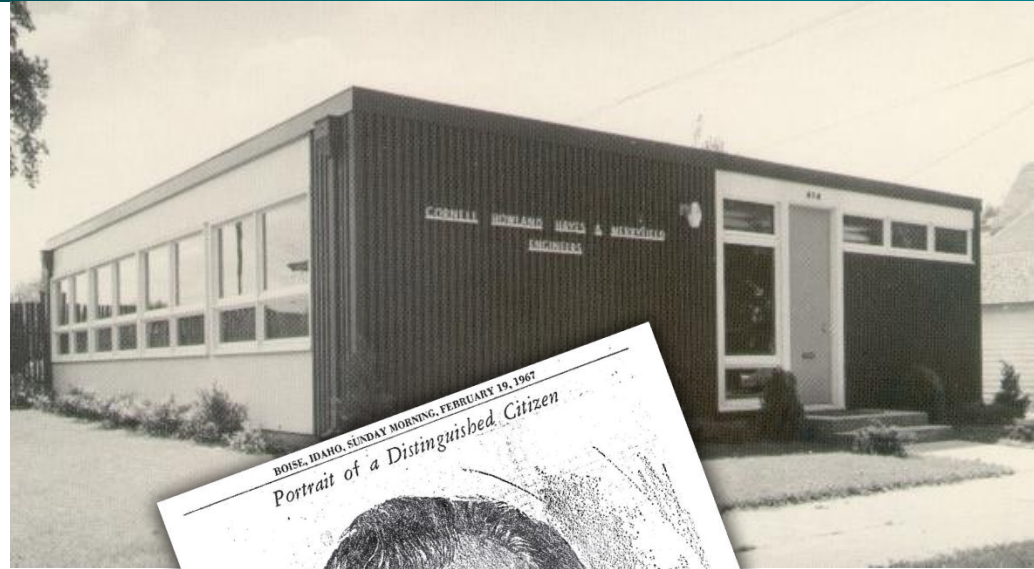
'00s

Beyond

# Key Office Milestones of the '60s

CH2MHILL

- Earl named national Director of the National Society of Professional Engineers
- Opened new office building, which expanded in 2 years
- Earl was recognized as a “Distinguished Citizen” by the Idaho Statesman in 1967



# Key Projects of the '60s

CH2MHILL

- R.T. French Company – Preliminary Study of Industrial Waste Treatment
  - First potato waste treatment system
- Idaho Potato Processors Assoc. – Pilot Plant Study, Secondary Potato Waste Treatment
- Logan City Corporation – Investigation of Sanitary Sewerage System
  - First project in Utah
  - Largest waste stabilization ponds designed by firm
- Idaho State Dept. of Highways – Boise Bypass
  - First Interstate Highway designed by the Firm

'50s

'60s

'70s

'80s

'90s

'00s

Beyond

# Key Projects of the '60s

CH2MHILL

First interstate highway project designed by CH2M HILL

***I-80 (now I-84) Franklin Interchange  
Boise, Idaho***



***I-80 (now I-84) Vista Interchange  
Boise, Idaho***



'50s

'60s

'70s

'80s

'90s

'00s

Beyond



# Key Office Milestones of the '70s

CH2MHILL

- Moved to the Clearwater Office on the Boise River
- By mid '70s the office grew to a staff of over 50 people
- Earl served as Central District Manager 1977 to 1980



'50s

'60s

'70s

'80s

'90s

'00s

Beyond

# Key Projects of the '70s

CH2MHILL

- Intermountain Gas – LNG Plant Design
  - First LNG Plant in the Firm
- Argonne National Laboratories – Misc. Facilities
- Idaho Department of Highways – Bridge Designs
  - Idaho's first PT Box Girders
- Wastewater Facilities Planning, Design, & Construction
  - Nampa, Caldwell, Boise, LaGrande, Twin Falls, Burley, Jerome, Idaho Falls

'50s

'60s

'70s

'80s

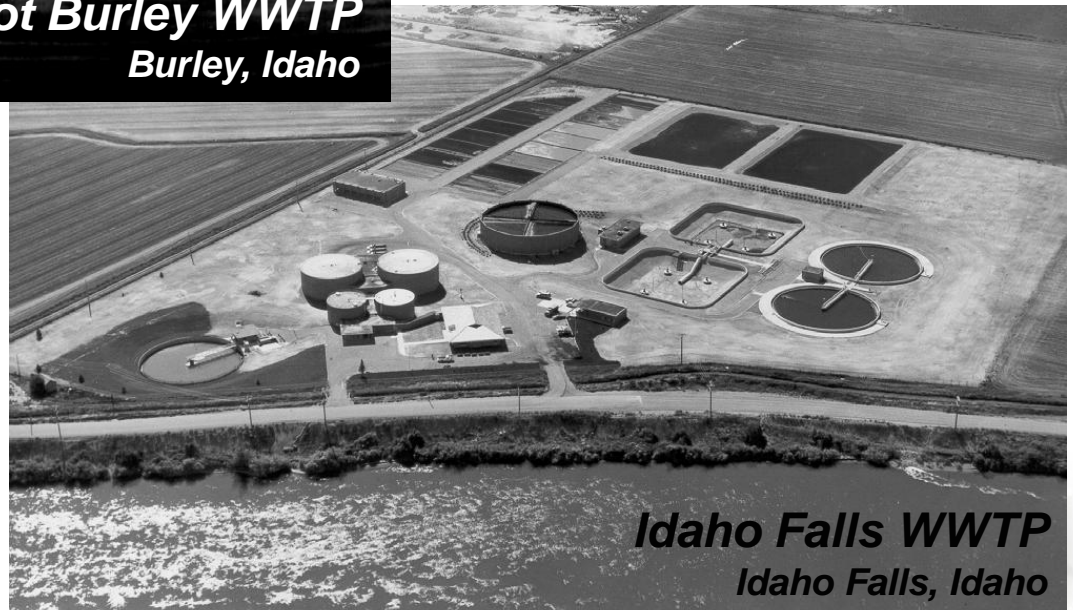
'90s

'00s

Beyond

# Key Projects of the '70s

CH2MHILL



'50s

'60s

'70s

'80s

'90s

'00s

Beyond

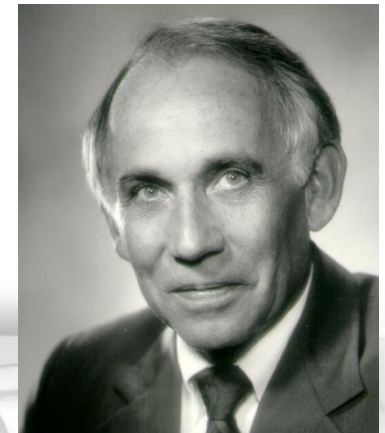
# Key Office Milestones of the '80s

CH2MHILL

- Earl named Chairman of the Board in 1980



- David Bennion named Boise Regional Manager
- Earl retires in 1983
- Boise office has a staff of 100+ employees



'50s

'60s

'70s

'80s

'90s

'00s

Beyond

# Key Projects of the '80s

CH2MHILL

- State of Idaho – McCall Summer Chinook Salmon Fish Hatchery
- State of Idaho – Capitol Mall Geothermal System Design and Construction
- Hewlett Packard Corporation – Facilities Design and Construction Management
- St. Luke's Regional Medical Center Expansion
- City of Idaho Falls – Gem State Hydro Project
- Idaho Transportation Department – Broadway/Chinden Connector Design

'50s

'60s

'70s

'80s

'90s

'00s

Beyond

# Key Projects of the '80s

**CH2MHILL**



'50s

'60s

'70s

'80s

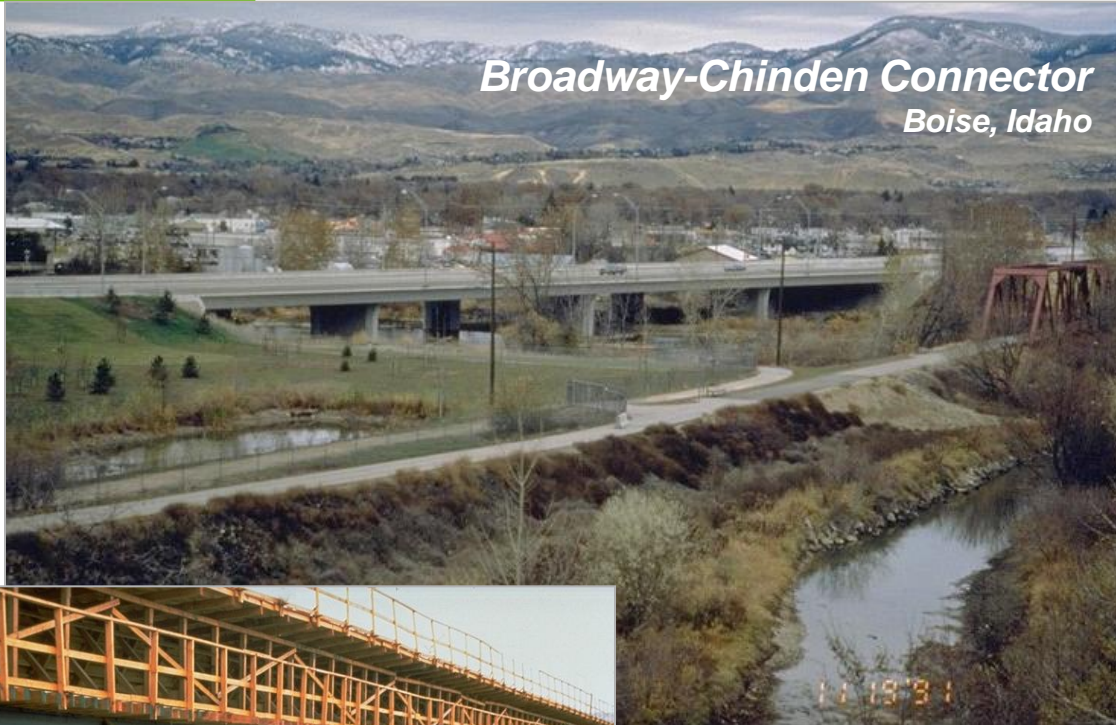
'90s

'00s

Beyond

# Key Projects of the '80s

CH2MHILL



*Capitol Mall Geothermal  
Boise, Idaho*

'50s

'60s

'70s

'80s

'90s

'00s

Beyond

# Key Office Milestones of the '90s

CH2MHILL

- Boise aligned with the Rocky Mountain Region – 1995
- Boise re-aligned with the Northwest Region – 1999
- Boise office grows to a staff of 140 in 1995

'50s

'60s

'70s

'80s

'90s

'00s

Beyond



# *Key Projects of the '90s*

CH2MHILL

- Ore-Ida Foods – Processing Facilities Design
- State of Montana – Silverbow Reclamation
- State of Idaho – Bunker Hill Reclamation
- City of Boise – Total Water Quality Management Program
- City of Boise – West Boise WWTF Expansion
- St. Luke's Regional Medical Center – East Tower Expansion

'50s

'60s

'70s

'80s

'90s

'00s

Beyond

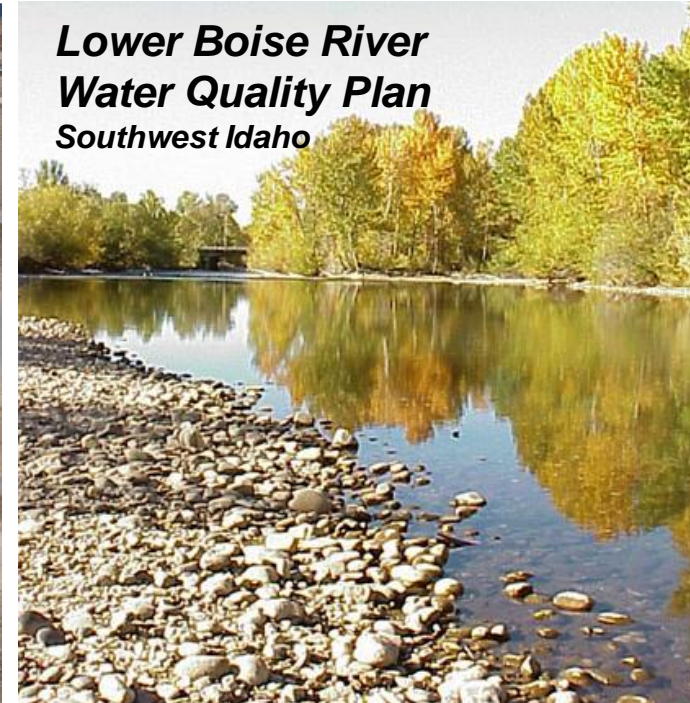
# Key Projects of the '90s

CH2MHILL

**West Boise WWTF**  
Boise, Idaho



**Lower Boise River  
Water Quality Plan**  
Southwest Idaho



'50s

'60s

'70s

'80s

'90s

'00s

Beyond

# Key Projects of the '90s

**CH2MHILL**



**Mountain States Tumor Institute (MSTI)**

Boise, Idaho



**St. Luke's Regional Medical Center – East Tower Expansion**

Boise, Idaho



**St. Luke's Regional Medical Center – Meridian**

Meridian, Idaho



'50s

'60s

'70s

'80s

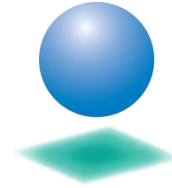
'90s

'00s

Beyond

# CH2M HILL Boise Today

CH2MHILL



**CH2MHILL**



More than 200 employees  
in multiple disciplines

# CH2M HILL Boise Today

CH2MHILL

Technical Disciplines	# of Staff	Technical Disciplines	# of Staff
Architects/Architectural Technicians	17	Cost Estimators	2
Urban/Regional Planners	3	Ecologists	4
Structural Engineers	11	Biologists	2
Civil Engineers	17	Hydrologist/Hydrogeologists	6
Electrical Engineers	6	Surveyors	8
Mechanical Engineers	6	GIS Specialists	3
Geotechnical Engineers	4	Construction Expert/Inspectors	5
Geologist/Soils Engineers	2	Instrumentation Engineer	1
Engineering Technicians/Designers/Analysts	18	Chemical Engineer	1
Water Resources Specialists	11	Value Engineer	1
Sanitary Engineers	1	Administrative/Support Staff	30
Transportation Engineers	13	Other	21
Environmental Engineers/Scientists	10	<b>TOTAL</b>	<b>203</b>

# *Key Projects – 2000 and Beyond*

**CH2MHILL**

## Key Projects of the 2000's and Beyond

'50s

'60s

'70s

'80s

'90s

'00s

Beyond

# Key Projects – 2000 and Beyond

CH2MHILL



**Enhanced Training in Idaho (ETI)**



'50s

'60s

'70s

'80s

'90s

'00s

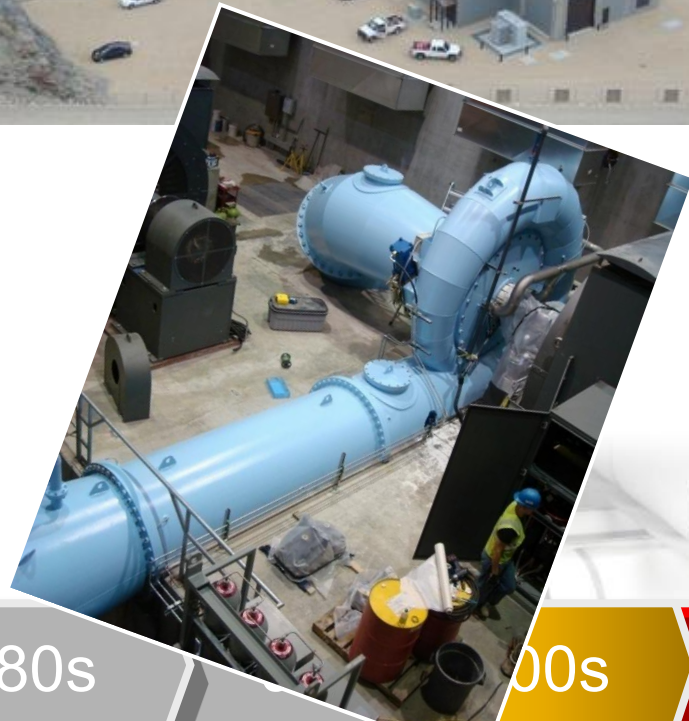
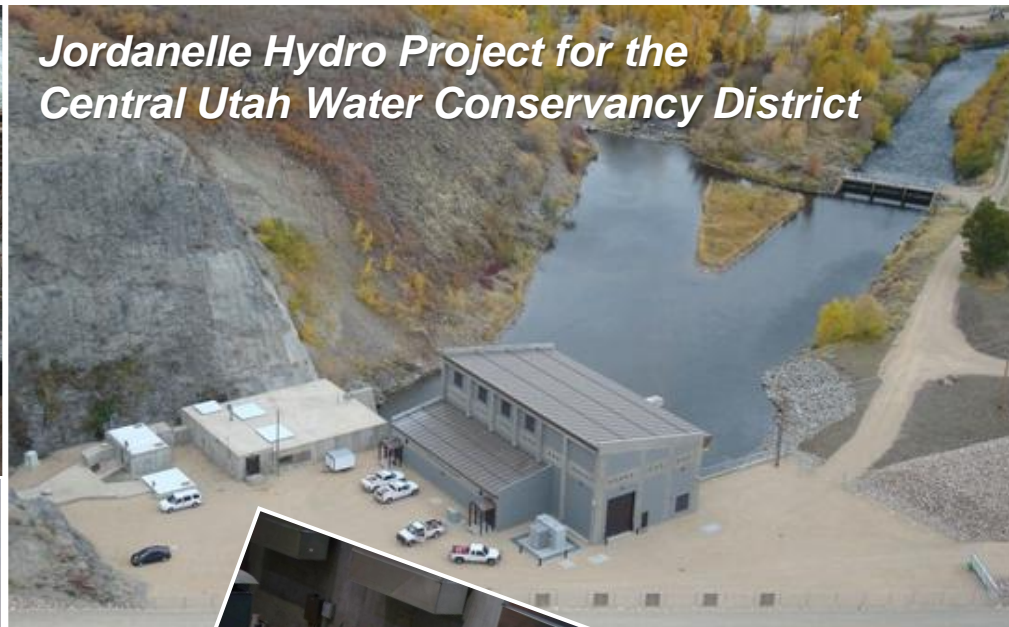
Beyond

# Key Projects – 2000 and Beyond

**CH2MHILL**



*Jordanelle Hydro Project for the  
Central Utah Water Conservancy District*



'50s

'60s

'70s

'80s

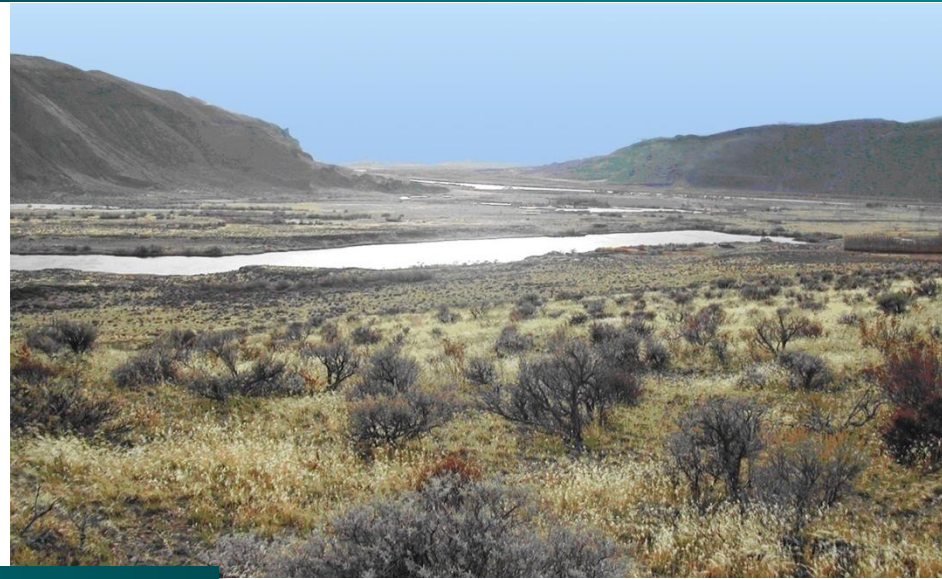
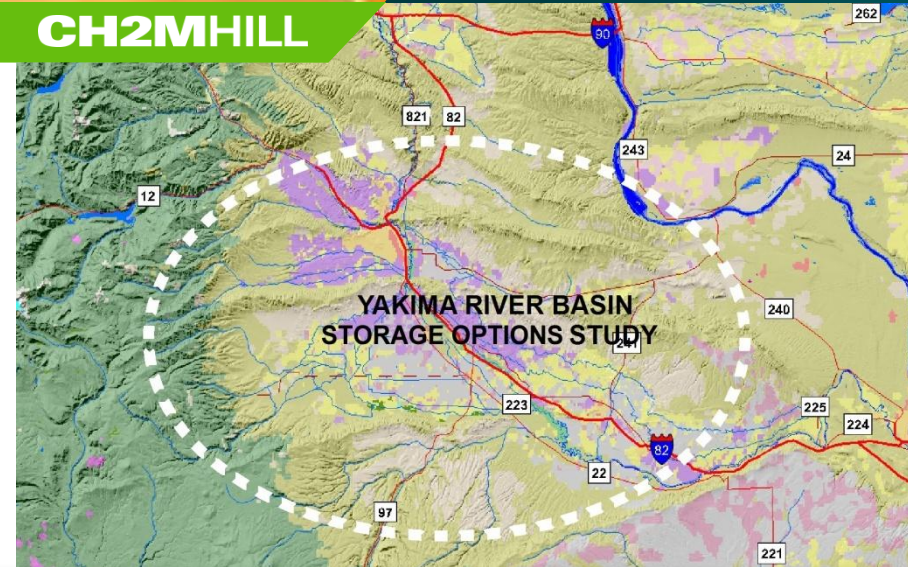
00s

Beyond



# Key Projects – 2000 and Beyond

CH2MHILL



US Bureau of Reclamation IDIQ Contract



'50s

'60s

'70s

'80s

'90s

'00s

Beyond

# Key Projects – 2000 and Beyond

CH2MHILL



**Ada County Hidden Hollow Landfill**  
Ada County, Idaho



'50s

'60s

'70s

'80s

'90s

'00s

Beyond

# Key Projects – 2000 and Beyond

CH2MHILL



**US 95 – Idaho Transportation Department  
Worley to Mica**



'50s

'60s

'70s

'80s

'90s

'00s

Beyond

# Key Projects—2000 and Beyond

CH2MHILL



*Idaho's Connecting Idaho Program*



'50s

'60s

'70s

'80s

'90s

'00s

Beyond

# Key Projects – 2000 and Beyond

CH2MHILL



**St. Luke's Health System –  
Magic Valley Medical Regional Medical Center**  
Twin Falls, Idaho



'50s

'60s

'70s

'80s

'90s

'00s

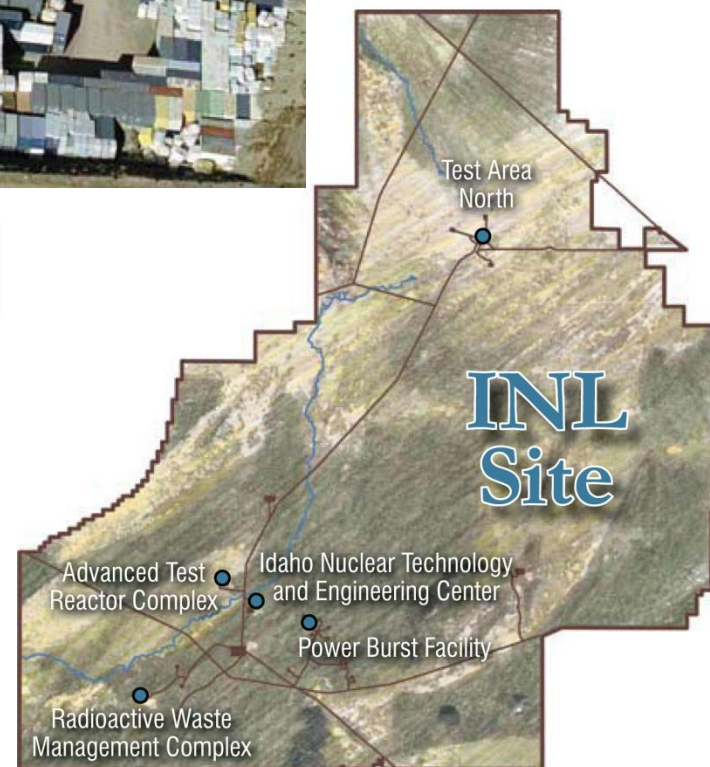
Beyond

# Key Projects – 2000 and Beyond

CH2MHILL



## Idaho Cleanup Project – INL



'50s

'60s

'70s

'80s

'90s

'00s

Beyond

# Key Projects – 2000 and Beyond

**CH2MHILL**



'50s

'60s

'70s

'80s

'90s

'00s

'10s

# Key Projects – 2000 and Beyond

CH2MHILL

- **City of Boise – Strategic Plan**
  - Wastewater Facilities Plan
  - Enterprise Wide Facilities Plan
  - Phosphorus Removal Plan
- **Saint Alphonsus Regional Medical Center – Owners Representative Services**
- **EPA – Clark Fork River**

'50s

'60s

'70s

'80s

'90s

'00s

Beyond



# *BOI Evolution*

CH2MHILL

- Organization
  - Intermountain Region – 1980
  - Rocky Mountain Region – 1995
  - Northwest Region – 1999
- Markets
  - 1950-1980 – Water, Wastewater, Facilities, Transportation
  - 1980-1990 – Superfund, Hydropower, Transportation, Industrial Wastewater, Facilities
  - 1990-Present – Facilities, Transportation, Wastewater, Water Resources, Solid Waste



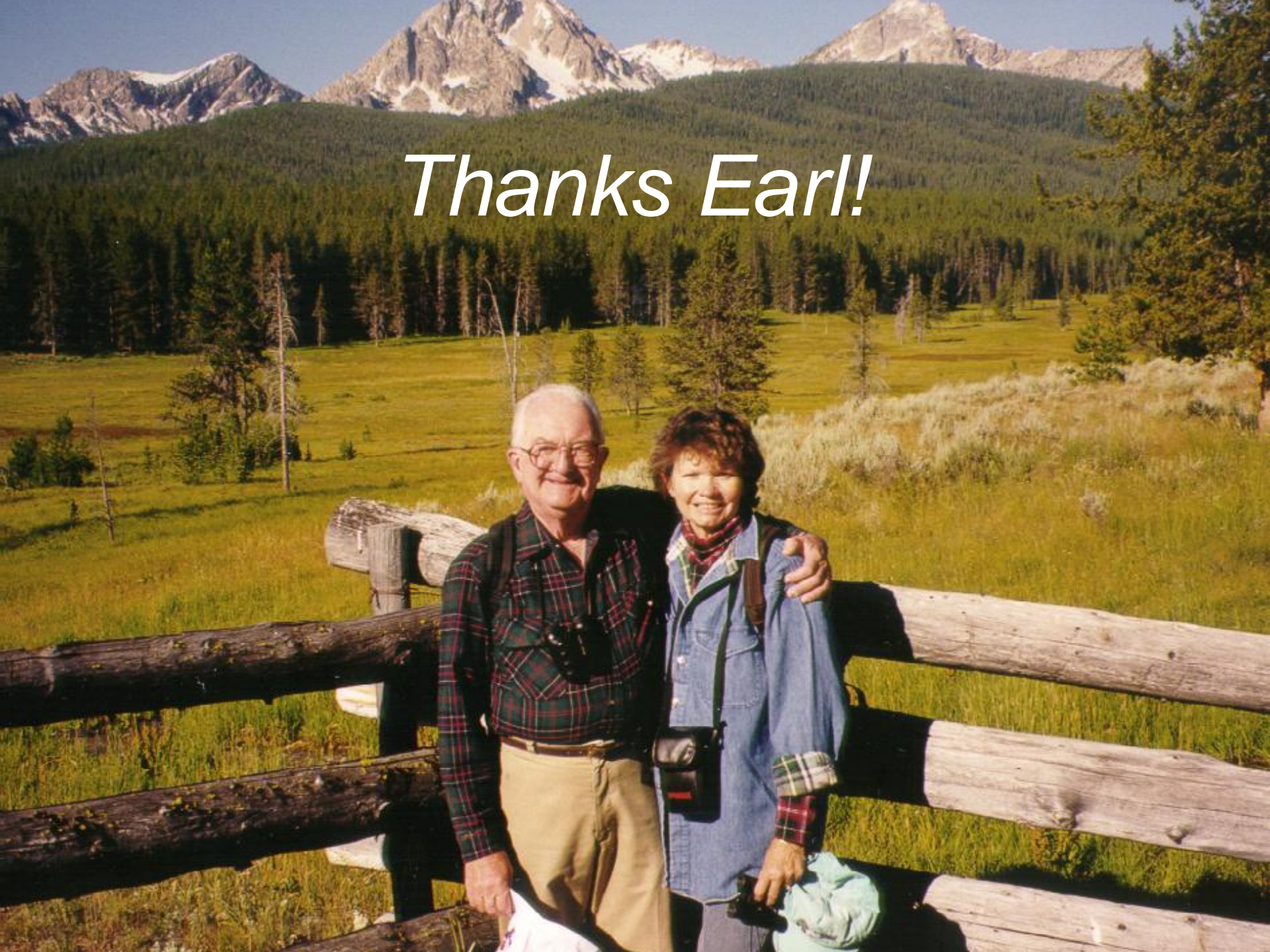
# *Earl's Legacy*

**CH2MHILL**

- **Client-based market**
  - Flexible view of the markets
  - We do what our clients need
  - Adapt and change with the market
  - Provide Quality Service!
  - Client Service Continuity
- **Leverage the strength of the Firm**
  - World-class expertise on the ground in Idaho
  - Horsepower
  - Leverage clients and services to other markets
- **Strong role in Governmental Affairs**
  - Earl opened the DCA office while Chairman
  - Commitment to the Community



*Thanks Earl!*



# Key Projects – 2000 and Beyond

CH2MHILL

- USACE – Enhanced Training in Idaho (ETI)
  - First Government Facilities Design/Build Contract
  - Led to Boise recognized as a DoD facilities delivery center
- Ada County – Hidden Hollow Landfill Designs
- Idaho Transportation Department – Connecting Idaho Program
- City Engineer – McCall, City of Sun Valley, Idaho Falls
- St. Luke's Health System – Magic Valley Medical Regional Medical Center

'50s

'60s

'70s

'80s

'90s

'00s

Beyond